



STORYBOARD

Module 4: You Can Change the Long-Term Outcomes of Drug Endangered Children

Course Information:

Module 4: You Can Impact the Long-Term Outcomes of DEC Children

Font: sans serif - see eLearning template

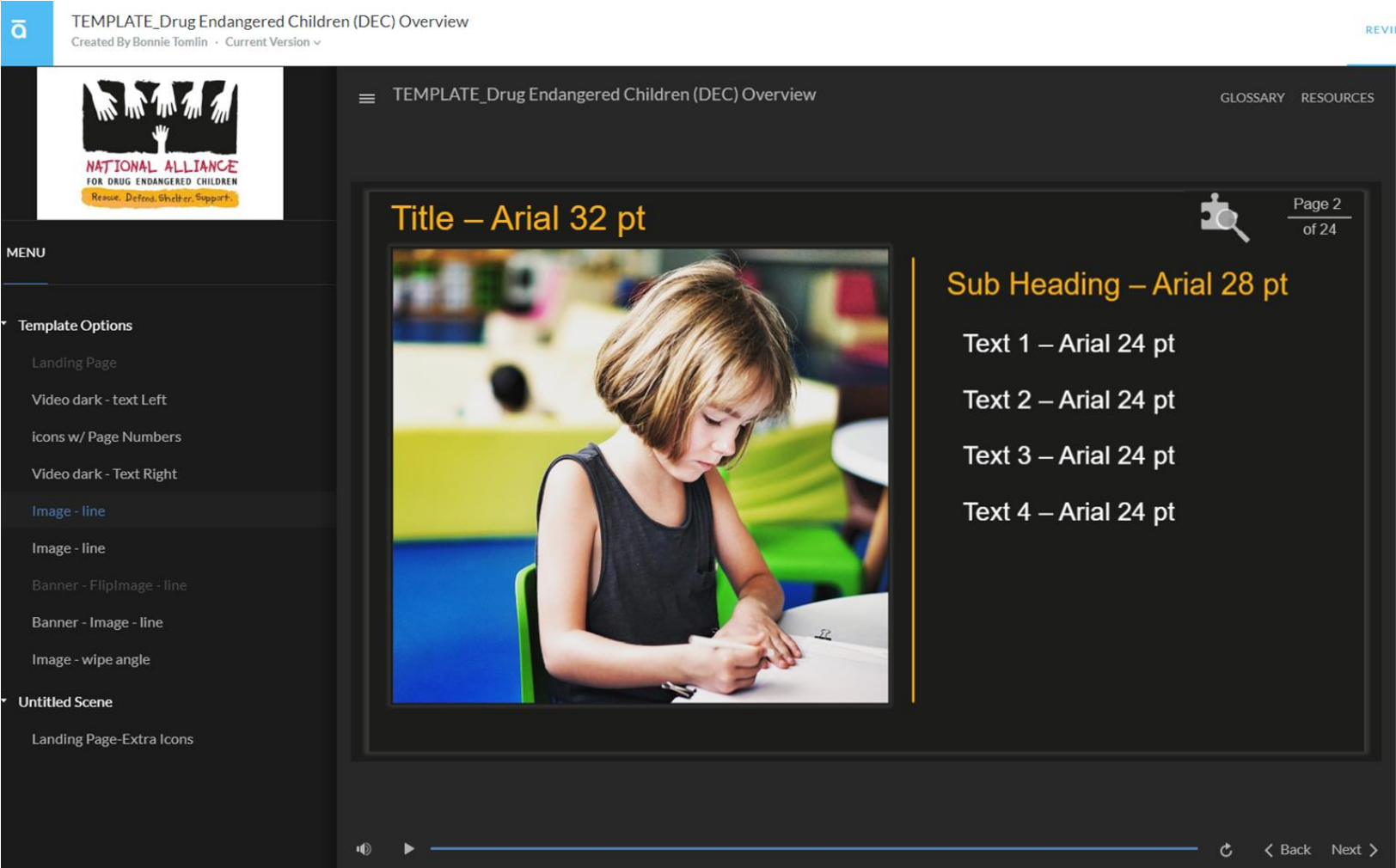
The player should include the following tabs:

- Closed Captioning
- Glossary
- Resources (printable .pdf file of content, printable .pdf copy of references, printable .pdf course certificate).

Revision History

Version	Date	Name	Notes
1	10-28-2018, 11/1/2018	Kate Milani, Sue Reetz	First draft of storyboard course design document
2	2-3-2019, 2-4-219	Kate Milani	Added slide 6 "Eric's Introduction", refining and searching for clips,, selecting videos,
	2-5-2019	Kate, Sue, Kris , Erric, Stacee	Frist review. we should expand on more long-term impacts
	2-6-2019	Kris, Kate	Kris added content for longterm impacts. Kate and Kris reviewed, cut and edited and removed various slides.
3	2-26-2019, 3-4-2019, 3-7-2019, 3-19-2019, 3-20-2019	Kate	New approach to Long-term impacts without or in addition the "ACES" Pyramid. Added Trauma and Brain Development and Impacts to society., Childhood trauma the cycle continues with cycle graph. Updated reduce trauma section to include more disciplines and word art of "trauma". Added knowledge checks and test questions.
	4/3/2019, 4/4/2019, 4-8-2019 4-11-2019	Sue , Eric, Stacee Kris Sue, Kate	Review/Edit Review/Edit Review/Edit
4	5/21/2019	Kate	Reviewing before narrator recording and development started.
5	6/7/2019	Kate	Minor updates post peer review feedback
6			

National DEC eLearning Template



Example screenshot of our template

Section Title - Example Slide

Screen Title

LO# Displays the learning objective addressed by the screen.
Will not be displayed on-screen in the actual course.

Developer Notes:

On screen interaction descriptions, which are written primarily for the course developer.

Reviewer Comments:

We will track reviewer comments here.

Source: source citations for images are located in close proximity to the image not in the public domain or owned by National DEC.

Audio

This is the narration script, which will be recorded by professional voice artist, unless otherwise stated. This text will be included in the Closed Captioning section of the course player.

Source Citations for content: There will be a Resources tab on the course player with a complete printable module reference list and the module slides will contain footnote notations. *For the purposes of the storyboard only sources are included in the Speaker Notes section.*

Introduction

Message from National DEC

LO# Displays the learning objective addressed by the screen.
Will not be displayed on-screen in the actual course.

Developer Notes:

Display first two bullets
timed with audio, then
remove and display last
three with audio.

We already have this developed as it begins each National DEC eLearning course.

Reviewer Comments:

Introduction

Message from National DEC

- + 9 million children in homes where there is illegal drug activity
- + National DEC provides resources and training
- + Intervene effectively to mitigate long term effects
- + See things from other perspectives
- + Look beyond your own mission

Eric Nation
National DEC Director of Training and Development
Former Law Enforcement Officer

Audio

An estimated 9 million children live in homes where a parent or other adult uses illegal drugs. Children growing up surrounded by illegal drugs are three times more likely to be verbally, physically or sexually abused, and four times more likely to be neglected. It is not easy to find and protect these children.

Fortunately, organizations like the National Alliance for Drug Endangered Children have made great strides in establishing training and resources that help law enforcement, child welfare, teachers, community groups and others identify and assist children growing up within such tragic circumstances. As a former law enforcement officer, I know we can provide a powerfully visible alternative to the neglect and violence that are part of the daily lives of too many children. Together, we can reduce the incidence of children's exposure to violence and neglect. We can intervene more effectively to help mitigate the long-term negative effects children face when they are exposed to this

kind of trauma

Introduction



Developers Notes:

Reviewer Comments:

Audio

Born to a teenage mother who was a heavy drinker, Angel spent her first two months in foster care until her mother was deemed “fit” to care for her. Angel didn’t have an easy childhood. She remembers struggling in school and having to take care of her mom. In the fifth grade, she was sent to a different city to live with the father she had only met once before. This didn’t improve her life. It turns out that Angel’s dad, step-brothers and step-mother were running a meth lab in their rural home. While living with her dad, Angel spent her time taking care of the younger kids in the home and trying to stay out of her dad’s way. By the time she was 13, she was very depressed and told a school counselor that she wanted to die. Angel’s dad was eventually arrested and sent to prison, and Angel moved back in with her mom. By this point, she had a serious lack of trust and respect for adults. She began using drugs and got involved in other criminal activities. Eventually and with the help of a local police officer and school counselor, Angel turned her life around. Today, even though she still has trouble trusting others, she no longer uses drugs, she’s quit smoking and she’s newly married.

Welcome!

1

This is your introduction to You Can Change the Long-Term Outcomes of Drug Endangered Children.

2



Long-term Impacts and Needs

3



Early Identification and Intervention

4

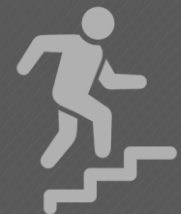
Reduce Trauma

5



Collaborative Response -
The DEC Approach

6



Next Steps

Long-term Impacts

LO#a: Identify the long-term impact and needs of drug endangered children throughout childhood and into adulthood.



Developer Notes:

Jenna full screen - no bullets

Reviewer Comments:

Audio

As part of your training, we'll review how to improve awareness of the long-term impacts to and needs of children exposed to the trauma of living in an environment where there is substance abuse or drug activity. Jenna Foster, Child Welfare describes her experiences and what she's learned.

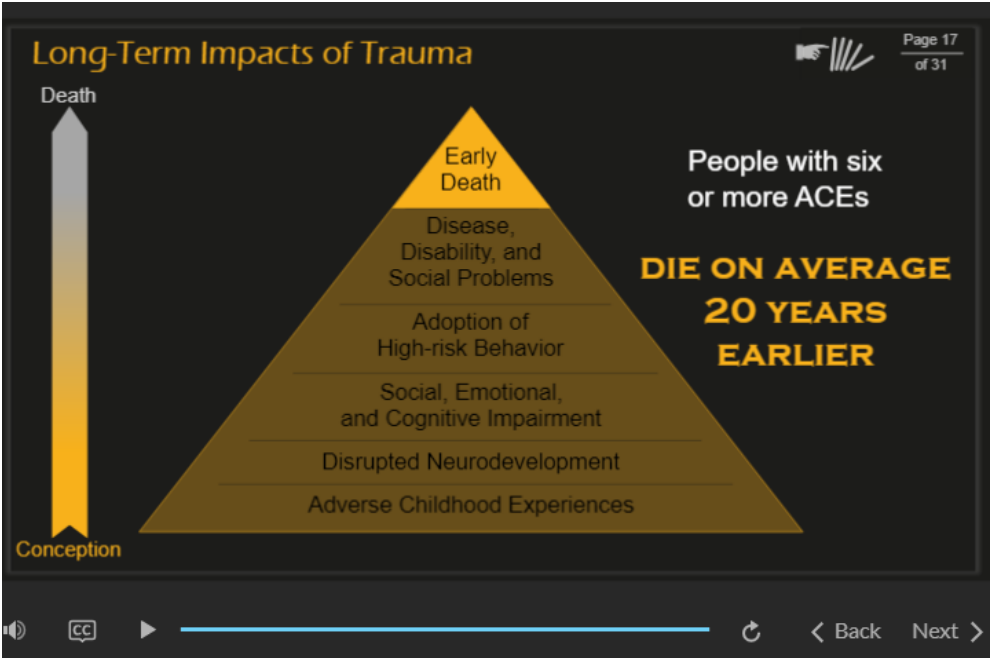
Long-term Impacts

Long-Term Impacts of Trauma

ACEs: Adverse Childhood Experiences

LO#a: Identify the long-term impact and needs of drug endangered children throughout childhood and into adulthood.

Developer Notes:
Reuse the animation of the ACEs Pyramid that is already developed.



Reviewer Comments:

Audio

source:https://www.cdc.gov/violenceprevention/acestudy/ACE_graphics.html

Many of these children have experienced ACES, or Adverse Childhood Experiences. ACES are traumatic events, including abuse and neglect. Each ACE a child faces increases their likelihood of early introduction into illicit drug use by two to four times.

Each type of trauma counts as one, no matter how many times it occurs. People and children who face trauma are assigned an ACE score ranging from 0 to 10. The higher their ACE score, the higher their risk for disease, social and emotional problems. Because drug-endangered children are likely to have high ACE scores, they're at an increased risk for negative long-term impacts throughout their lives.

ACE categories include household dysfunctions such as witnessing domestic violence or growing up with family members who have substance use disorders due. Disrupted neurodevelopment includes physical damage to a child's growing brain, which can have psychological implications such as cognitive delays or emotional difficulties.

Social, emotional, and cognitive impairments can lead to psychological problems. These often manifest as high-risk behaviors such as smoking alcohol and substance abuse.

High Risk Behaviors can lead to long-term physical health problems such as obesity, diabetes, stroke and heart disease.

Finally, people with six or more ACEs die on average 20 years earlier than those without ACES.

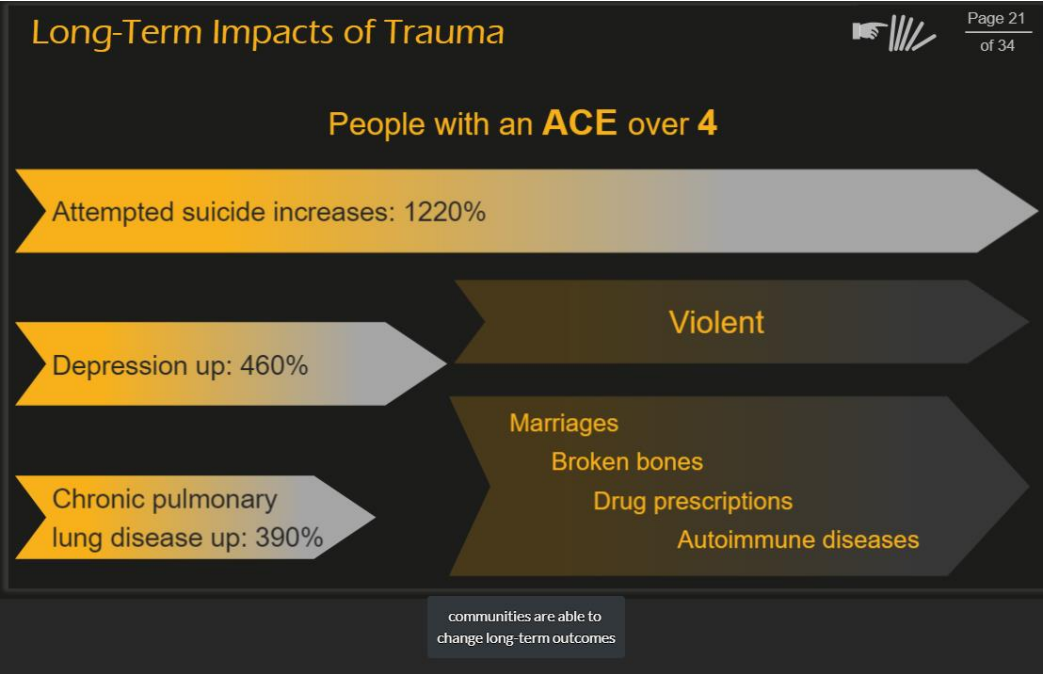
Long-term Impacts and Needs

Long-Term Impacts of Trauma

LO#c: Identify the long-term impact and needs of drug endangered children throughout childhood and into adulthood.

Developer Notes:

Stats are animated on the screen along with the narration.
Reuse the animations already developed.



Reviewer Comments:

Audio

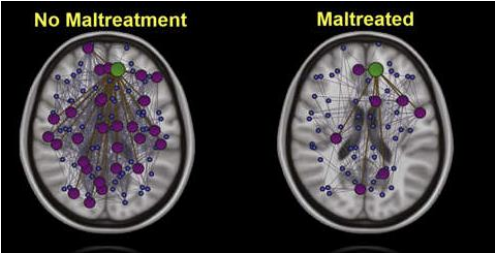
People with an ACE score of four or more are twice as likely to be smokers and seven times more likely to be alcoholics. Once someone has an ACE score over four, their likelihood of chronic pulmonary lung disease increases by 390 percent; depression by 460 percent; and attempted suicide, by 1,220 percent. These people are also more likely to be violent, have more marriages, more broken bones, more drug prescriptions, more depression and more autoimmune diseases than those without high ACE scores. With the help of specialized services to provide intervention and treatment services, communities are able to change long-term outcomes and break the multi-generational cycle of substance abuse for these children impacted by trauma.

More information regarding ACEs is available as a printable document in the resources.

Long-term Impacts and Needs

Childhood Trauma and Brain Development

Young Adult Brains



Increased risk for:

- Cognitive
- Emotional
- Behavioral

Emotional

- Attachment disorders
- Post Traumatic Stress Disorder (PTSD)
- Depression
- Anxiety
- Complex emotions



Cognitive

- Delayed language
- Learning disabilities
- Attention, focus, memory

Behavioral

- Interpersonal problems
- Inappropriate sexual behavior
- Juvenile delinquency and adult criminality

LO#c: Identify the long-term impact and needs of drug endangered children throughout childhood and into adulthood.

Developer Notes:

young adult brains source:
Source:

<https://www.drugabuse.gov/news-events/nida-notes/2015/11/childhood-maltreatment-changes-cortical-network-architecture-may-raise-risk-substance-use>

<https://pixabay.com/photos/students-classroom-learn-school-377789/>

<https://pixabay.com/photos/baby-tears-portrait-people-babe-3363419/>

<https://www.shutterstock.com/image-photo/frightened-african-american-schoolboy-being-bulled-1066233650>

Reviewer Comments:

Audio

Now let's take a closer look at how childhood trauma impacts brain development. Brain images from a 2014 National Institute on Drug Abuse study showed that young adults who had been maltreated as children, had differences in their brain connections than those who didn't experience trauma. Brain research is providing scientific evidence for the cognitive, behavioral and emotional problems drug endangered children face throughout their lives.

Examples of cognitive difficulties include delayed language, learning disabilities and deficits in attention, focus and memory. They're also at a higher risk for emotional problems including attachment disorders, Post-Traumatic Stress Disorder or PTSD, depression, anxiety and issues regulating complex emotions such as love, anger, guilt and shame. Finally, these children are also at an increased risk for behavioral issues such as interpersonal problems, inappropriate sexual behavior, juvenile delinquency and adult criminality.

A complete printable checklist of evidence of cognitive, behavioral and emotional problems you can look for is available on the second page of the Children at Risk - Evidence Sheet in the resources.

Long-term Impacts and Needs

Childhood Trauma - The Cycle Continues

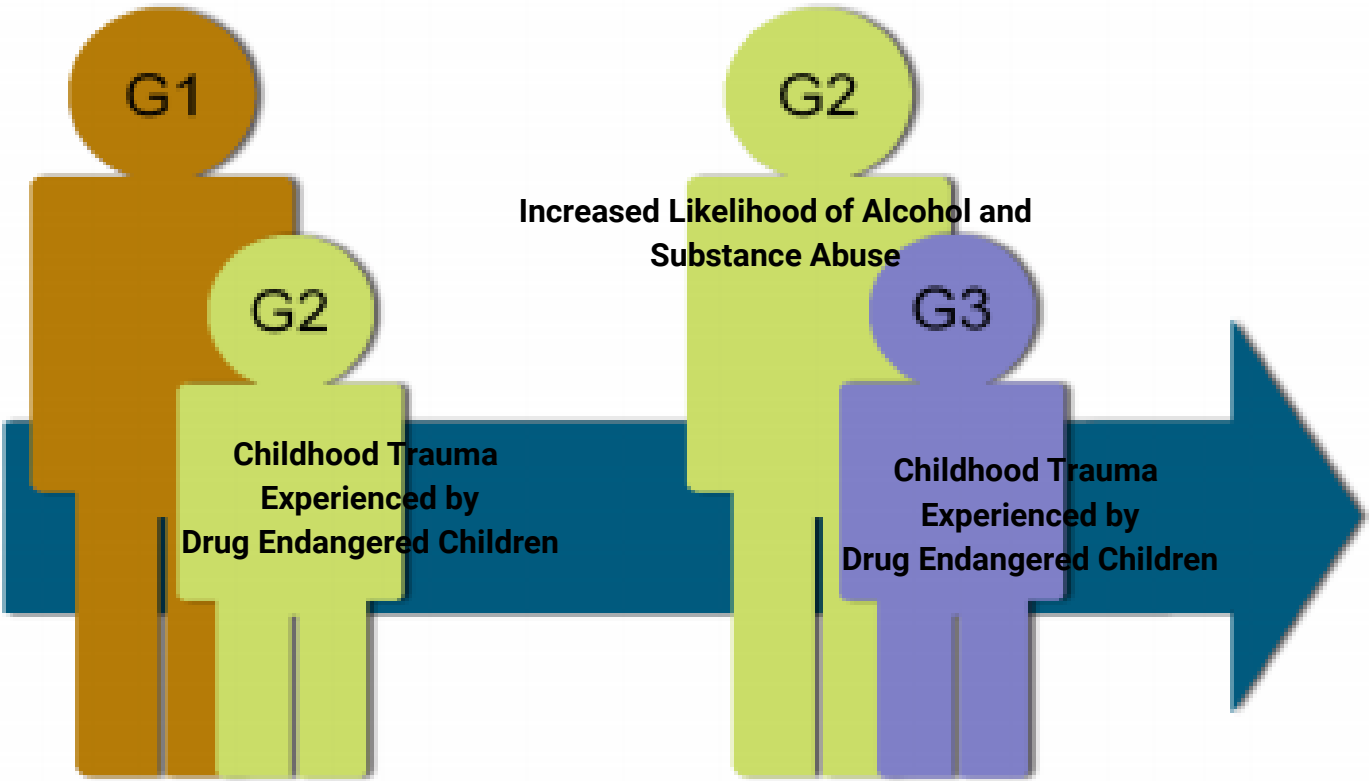
LO#c: Identify the long-term impact and needs of drug endangered children throughout childhood and into adulthood.

Developer Notes:

Match colors to the color palette used in the course player template

This is the starting point for the animation.

Reviewer Comments:



A simplified diagram of intergenerational transmission: Maltreatment by the parent (G1) of the child (G2) in the first generation leads to maltreatment by the parent (G2) of the child (G3) in the second generation.

Audio

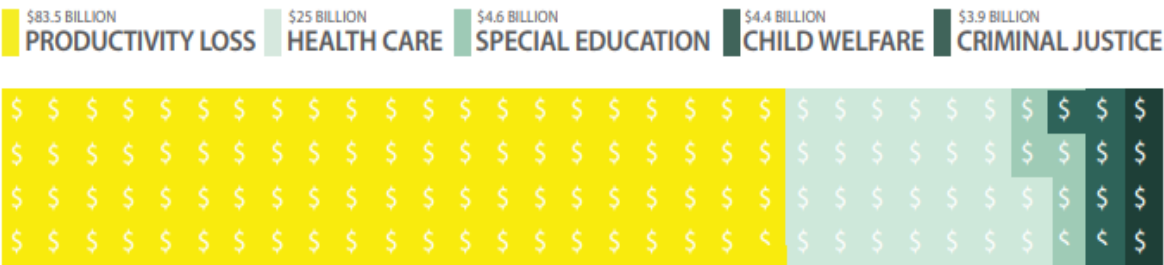
Additional research shows an increased likelihood that children who have experienced trauma will abuse alcohol and substances themselves. Without intervention, the multigenerational cycle of substance abuse will continue from one generation to the next.

Long-term Impacts and Needs

Long-Term Impacts of Childhood Trauma on Society

ECONOMIC TOLL

The Centers for Disease Control and Prevention (CDC) estimates that the lifetime costs associated with child maltreatment at **\$124 billion**.



https://vetoviolence.cdc.gov/apps/phl/images/ACE_Accessible.pdf

Audio

In addition to the negative impacts caused to drug-endangered children and their families, we also need to recognize the extremely large societal costs of childhood trauma or maltreatment. A 2012 Centers for Disease Control study of confirmed childhood maltreatment cases for a 12-month period, reported an estimated total lifetime financial cost of \$124 billion or \$210, 000 per victim. The lifetime cost for victims includes productivity losses, special education needs, child welfare costs, criminal justice and medical costs. You can reduce the impacts of childhood trauma experienced by drug endangered children with prevention, education, and targeted services. Preventative programs have shown favorable benefit to cost ratios. For example, for every dollar invested in the Nurse Family Partnership, which is a community health program designed to help and empower first-time moms, it reduced future costs by five dollars and 70 cents. This program not only provides much needed medical care to young, first-time moms from pregnancy through the child’s second birthday, but it also builds trust between the mom and a health-care provider.

The U.S. Triple P (Positive Parenting Program) System, funded by the CDC, has produced 47 dollars of societal benefits for every dollar invested. It’s a parenting and family support system designed to prevent - as well as treat - behavioral and emotional problems in children and teenagers.

LO#c: Identify the long-term impact and needs of drug endangered children throughout childhood and into adulthood.

Costs

- \$124 Billion a year
- Lifetime costs \$210, 00 per victim

Prevention programs

- Nurse-Family Partnership - \$1 spent returns \$5.70
- Triple P -\$1 spent returns \$47

Developer Notes:

Please create a simple animation for the \$1 spent returns \$47.

Perhaps \$1 → \$47

Reviewer Comments:

Long Term Impacts and Needs

Knowledge Check:

A child is brought into an Emergency Department after a drug raid. Based on the information provided by Law Enforcement, the physical exam, and an interview with the child, it's determined she's has experienced multiple traumas from living in a drug endangered environment.

What is she at risk for throughout her life? (Select all that apply.)



Audio

LO#a Identify the long-term impact and needs of drug endangered children throughout childhood and into adulthood.

Cognitive problems such as language delays and learning disabilities.

Emotional problems such as anxiety, depression and PTSD.

Behavioral problems such as inappropriate sexual behavior, juvenile delinquency and adult criminality.

Developer Notes:

image source:
<https://www.shutterstock.com/image-photo/sad-frightened-little-girl-bloodshot-bruised-221669086>

Reviewer Comments:

Correct: Brain research is providing scientific evidence for the cognitive, behavioral and emotional problems drug endangered children are at risk for experiencing throughout their lives.

Incorrect: Try again

Importance of Early Identification and Intervention




LO#b: Recognize the importance of early identification and intervention in changing the trajectory of a child’s life and breaking the multigenerational cycle of abuse.

Developer Notes:
Each of the rectangles should contain the head of the speaker in the video.

Note: Individual’s name and profession under the picture. Will also be included in the video clip.

What can professionals look for?

1. Signs of children
2. Indicators increased risk of abuse or neglect
3. Signs of physical, emotional or sexual abuse
4. Signs of neglect




Justin

How can we help children overcome early trauma?



Eric Nation, National DEC Director of Training and Development, Former Law Enforcement Officer

How can early identification intervention break the long-term multi-generational cycle of substance abuse?



Dr. Kiti Freier Randall

Why is building resilience in children important to long-term outcomes?

Viewer Comments:

Audio

Every professional who comes in contact with children and/or parents/caretakers has the opportunity to identify risks to children and trigger an intervention. What should professionals look for? Signs of children , indicators of increased risk of abuse or neglect, signs of physical, emotional or sexual abuse and signs of neglect. A complete printable checklist of the risks professionals should look for to identify a child in danger is attached in the resources.

So how can you help? Click on each question to hear answers from experts on how we can help children overcome early trauma and build resilience, and break the cycle of multi-generational abuse.

Importance of Early Identification and Intervention

Knowledge Check: Importance of Early Identification and Intervention

LO#b: Recognize the importance of early identification and intervention in changing the trajectory of a child’s life and breaking the multigenerational cycle of abuse.

Developer Notes:

Source:
<https://pixabay.com/photos/child-education-fear-terror-1439468/>

Early identification of and intervention on behalf of drug endangered children: (Select the correct response.)



does nothing to change long-term outcomes for a child who has had multiple adverse childhood experiences.

can change the trajectory of a child’s life by providing positive reinforcement, a support structure and building resilience.

Reviewer Comments:

Audio

Correct: When you identify a drug endangered child early you can help them overcome the effects of childhood trauma and change the trajectory of their life. Interventions can have positive long-term effects on their long-term health and life potential as well as the economic cost to society.

Incorrect: Try again

Reduce Trauma

LO#c Determine the best approach to a particular situation to reduce trauma for DEC Children.

Increases trauma

- Speaking negatively about parents
- Not interacting with or interacting with children a negative way
- Doing tactical entries when children are home
- Handcuffing parents in front of children
- Wearing face masks or throwing flash bangs
- Subjecting children to repeated interviews

Reduces trauma

- Serving as a protective and stress reducing buffer
- Listening attentively
- Responding honestly
- Sharing information to avoid repeated interviews
- Providing targeted services
- Identify at the earliest possible point

Trauma
Trauma

Developer Notes:

Show image the word Trauma growing larger with the increase bullets and getting smaller with the reduce bullets

We may also want to include some images on the screen.

Reviewer Comments:

Audio

It's important to recognize that you have the potential to worsen the impact of previous trauma when you interact with drug endangered children by:

- Speaking negatively about parents or caregivers in front of children
- Not interacting with children or interacting with children in a negative way
- Doing late-night or early-morning tactical entries when children are home
- Handcuffing parents in front of the children
- Wearing face masks or throwing flash bangs
- and Subjecting children to repeated interviews

Fortunately, you can decrease trauma experienced by drug endangered children by following and implementing these simple practices:

- Serving as a protective and stress reducing buffer for children

Reduce Trauma

LO#c Determine the best approach to a particular situation to reduce trauma for DEC Children.

Developer Notes:
Add appropriate images:

Video from scene from Appleton House shoot.
THE WRONG WAY or
VIDEO ONE

Video from scene from Appleton House shoot.
THE RIGHT WAY or
VIDEO TWO

Reviewer Comments:

Select look at M2.

Audio

In these videos, we see a police officer and a child welfare professional enter a home, respond to the children, and interact with the parent and children. What differences do you notice in the demeanor of the officer and child welfare professional between the two videos? What differences were there in how the parent and children responded? In the second video, what techniques did they use to reduce trauma for the children and the parent?

(after learner plays the two scenes) Audio: Notice how in the second scenario, the child welfare professional spent time building rapport with the mom. As the professional got her to talk, she became receptive to accepting interventions. The officer and the professional were careful not to speak negatively about the parent, which reduced trauma for the children. They were respectful while doing their jobs. The officer interacted with the children in a positive way by listening attentively, responding honestly and serving as a stress reducing buffer while the mom was being interviewed. The children in the second video will be more likely to approach and turn to law enforcement if they need help

Collaborative Response - The DEC Approach

Defining the DEC Approach

LO#d: Recognize the elements required for a multidisciplinary collaborative response to meet the needs of drug endangered children.



ODeveloper Notes:

Picture from:
https://www.shutterstock.com/image-photo/occupations-doctor-waitress-housekeeper-police-businesswoman-181048070?src=jcnHW_I00A0a2YRnjTeLsQ-1-38

Each section will highlight as it's talked about in the narration - shows how the three parts work together.

Icons are developed and standard in each of the courses. They are also used in the National DEC in person training materials.

Reviewer Comments:

Audio

As a professional who has opportunities to work with endangered children as part of a multi-disciplinary DEC alliance, you can make a difference in the child's life. The DEC approach aims to break the cycle of abuse and neglect by empowering the professionals who work to transform the lives of children and families impacted by substance abuse and drug activity. Using the DEC approach means having a common vision, ongoing collaboration and ongoing change.

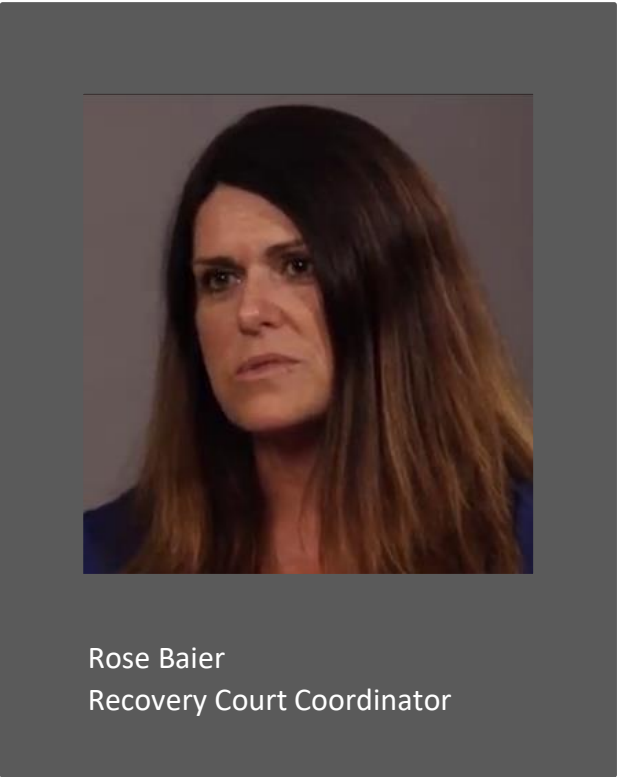
Our common vision is having 100% healthy, happy and safe children in all communities across the nation. Ongoing collaboration means we work to build ties between professionals in our community that benefit children. This means I make you stronger, and you make me stronger.

And ongoing change means we work every day to be better at helping these children. This might mean pursuing improvements to policies and procedures, gathering and exchanging evidence with others, using practices that reduce trauma and increase resilience in drug endangered children, or contacting National DEC for an in-person training.

Collaborative Response - The DEC Approach

The DEC Approach Video

LO#d: Recognize the elements required for a multidisciplinary collaborative response to meet the needs of drug endangered children.



Developer Notes:

Reviewer Comments:

Audio

As you watch this video of Recovery Court Coordinator Rose Baier describe how the multidisciplinary response has long-term benefits for DEC children, think about how you might change your own practices to change the trajectory of a drug endangered child’s life.

DEC Approach Benefits

<https://www.shutterstock.com/image-photo/business-teamwork-cooperation-jigsaw-isolated-1038671743>



<https://www.shutterstock.com/image-photo/occupations-n-center-1YUakOzWtICMNcbaw-1-74>



Change this from a slider interaction to some other type of interaction. Maybe a tabbed, click to reveal, etc. Bonnie - your choice.

<https://www.shutterstock.com/improvement-concept-on-virtual-660001522?src=h0g7G4s8Rv>

Common Vision

Benefits:

- brings professionals together
- gets people on the same page
- keeps people focused
- provides an end point

Ongoing Collaboration

Benefits:

- increases information sharing and reduces trauma from multiple interviews
- sharing of resources
- collaborative responses

Ongoing Change

Benefits:

- allows for different responses
- makes sure we are not stuck in old ways
- always looking for different solutions
- ability to change as needed

Changing the Status Quo

Success Stories
You can make a difference



Dr. Kiti Freier Randall



Justin



Parent in Recovery

Developer Notes:

Note: These three videos have been edited into one video that should autoplay after narration.

Reviewer Comments:

Audio

You can make a difference. Listen as Dr. Kiti Freier Randall, Pediatric Neurodevelopmental Psychologist, Just Stubbendick, Law Enforcement Office as well as a parent in recovery explain how the DEC Approach can change long-term outcomes and help break the multigenerational cycle of substance abuse and drug activity. Who’s life can you change tomorrow?

Impacts

Reduce Trauma

On-screen action:
Conclusion – show the blocks
moving off the picture as they're
discussed in the audio.
Finish with the words “DEC
Approach” overtop the pic

Image from:
<https://pixabay.com/en/man-child-baby-grandfather-grandpa-3552247/>

Collaborative
Response

Early identification and
intervention


Audio

Today you've learned about the long-term impacts and needs of Drug Endangered Children (DEC) throughout their childhood and into their adulthood. You learned how Adverse Childhood Experiences (ACEs), such as growing up in households where substance use and drug activity are present, impacts children long-term including cognitive deficits, emotional risks, high risk behavior, and health problems. You can reduce additional exposure to trauma for these kids by intervening early and helping to build resilience through changes in your practices, which can change the trajectory of a child's life and help to break the multigenerational cycle of substance abuse.

Changing the Status Quo

LO#

National DEC Offers




**NATIONAL ALLIANCE
FOR DRUG ENDANGERED CHILDREN**

www.nationaldec.org

National DEC Offers

- + Variety of trainings and technical assistance
- + Online resource center
- + National network of thousands of professionals and experts
- + Digital newsletter that provides up-to-date information
- + Easy to use Roadmap and Toolkit



Stacey Read
National Alliance for Drug Endangered Children
Director of DEC Network Development

children + drugs = **RISK**

Page 31 of 34

Audio

ODeveloper Notes:
Time bullets to key points in audio.
Audio by Stacey.
Reviewer Comments:

Each and every one of us can change the status quo as well as change the lives of drug endangered children. The national alliance for drug endangered children was created to help you. Some of the things we offer include:

- A variety of trainings in a variety of formats including in-person, online, and via webinar.
- An online resource center for easy access to articles, videos, publications, example MOU's, protocols and more
- A national network of thousands of professionals and experts from many disciplines
- An up-to-date digital newsletter that provides up-to-date information from the field
- And National DEC's easy to use Roadmap and Toolkit to assist professionals and communities in setting up multidisciplinary alliances across the nation

For the most current listing, please visit our website at www.nationaldec.org

Changing the Status Quo

LO#

Developer Notes:
After the audio, display the information on the next slide.

Next Steps

What can you do next?

Identify what next steps you can take now that you’ve completed this module. (Select all that apply.)

Take another National DEC eLearning course module located on the COPS portal.

Sign-up for an in-person course with National DEC. For information, go to nationaldec.org.

Contact your state, local or tribal DEC alliance or contact National DEC directly for more information. Go to nationaldec.org for more information.

Sign-up for a monthly eUpdate newsletter from National DEC from nationaldec.org.

Reviewer Comments:

Audio

Yes, there are many next steps you can take to improve the lives and outcomes of drug endangered children. Improving your understanding of the challenges and needs is a great start. We hope you’ll continue to learn more so you can do more.

Pre- and Post-Test Questions

1. Adverse Childhood experiences or ACES are stressful traumatic events such as abuse and neglect. Each ACE increases the likelihood of early initiation into illicit drug use by two to four times.

True or False

1. Research shows that childhood trauma: (Select the correct response.)
 - a. Impacts brain development, which can result in an increased risk for cognitive, behavioral, and emotional problems throughout life.
 - b. will never have long-term impacts if a child is removed from the traumatic environment as the brain will recover as soon as they are removed from the environment.
1. Childhood trauma costs society hundreds of billion dollars each year in terms of lost productivity, special education, child welfare, criminal justice and medical costs. (Select the correct response.)
 - a. Preventative programs have shown positive dollar value of benefits to society for each dollar invested.
 - b. Since the causes of child abuse and neglect are complex, it is impossible to create preventative programs that show a positive benefit to society.
1. You must identify a drug endangered child before the age of five in order for intervention to be able to overcome the effects of childhood trauma and change the lifelong impacts on his or her life.

True or False

Pre- and Post-Test Questions

5. During a drug raid where parents and their children are present, which of the following actions can increase trauma for the children?
(Select all that apply.)
- a. Speaking negatively about parents in front of children
 - b. Not interacting with the children
 - c. Handcuffing parents in front of children
 - d. Subjecting children to repeated interviewing

A successful multidisciplinary collaborative approach requires a Common Vision, Ongoing Collaboration, and Ongoing Change.

5. A **Common Vision** requires each discipline to stay focused only on a common vision within their profession.
True or **False**
5. **Ongoing Collaboration** increases information sharing among partners and reduces childhood trauma for the drug-endangered children due to multiple interviews.
True or False
5. **Ongoing Change** leads to innovative solutions for supporting the long-term needs of drug endangered children
True or False

LO#

Developer Notes:

This project was supported by cooperative agreement number - 20 I7CKWXK008 awarded by the Office of Community Oriented Policing Services, U.S. Department of Justice. The opinions contained herein are those of the author(s) and do not necessarily represent the official position or policies of the U.S. Department of Justice. References to specific agencies, companies, products, or services should not be considered an endorsement by the author(s) or the U.S. Department of Justice. Rather, the references are illustrations to supplement discussion of the issues. The Internet references cited in this publication were valid as of the date of this publication. Given that URLs and websites are in constant flux, neither the author(s) nor the COPS Office can vouch for their current validity.



Reviewer Comments:

Copyright© 2019 National Alliance for Drug Endangered Children. The U.S. Department of Justice reserves a royalty-free, nonexclusive, and irrevocable license to reproduce, publish, or otherwise use, and authorize others to use, this resource for Federal Government purposes. This resource may be freely distributed and used for noncommercial and educational purposes only.

Audio

Glossary (to be inserted into course player)

Term	Definition
ACES	Adverse Childhood Experiences
Addiction	Chronic, relapsing disorder characterized by compulsive drug-seeking
At risk	Subject to potential negative effects including injury, illness, and behavioral/emotional damage
Change	Make or become different
Children	Any human under the age of 18
Chronic	Long-term and/or happening frequently
Cognitive	Thinking, reasoning, or other conscious intellectual activities
Collaboration	Exchange of information, altering of activities, sharing of resources, enhancement of the capacity of another for the mutual benefit of all
Consequences	The natural result of a behavior or impact from the behavior
DEC	Drug Endangered Children
Distribution	Supplying illegal substances to buyers - delivering drugs to buyers
Drug Activity	Drug use
Drug(s)	Any non-food substance designed to affect the function of a human being; narcotics